

Rates

Two (2) night minimum required. A deposit equal to one night stay is required to hold a reservation. Peak season rates apply when booking for Spring Break or Holidays. All rates are subject to change and/or to applicable tax. Pets are allowed but not certain breeds. Contact the office for complete pet policy. We do not allow day visitors – all guests must pay for an overnight stay. Vehicle tags will be issued to all registered guests and are required for park entry. We reserve the right to refuse service to anyone and will not be responsible for accidents or injury to any guest or for loss of money, jewelry and/or valuables of any kind.

Check In Time: 3:00 PM Check Out Time: 11:00 AM

Identification card and credit card must be on file for all cabin, shelter, tent, or rv rentals.

No early check in allowed. All cabins/campsites/RV sites must be vacated and cabin key turned in by check out time or next night fee will be charged to your account or credit card.

All cabins/shelters are non-smoking. An additional \$150.00 will be charged to your credit card if you smoke inside a cabin or shelter. Additional cleaning fee of \$100.00 will be charged to your credit card if cabin is not left in order. Linens not provided. Tents are NOT allowed in the yards of the cabins or shelter. All cabins/shelter are subject to Hotel/Motel Tax.

CABINS/SHELTERS

Shelters: (4 Person Occupancy) \$82.50 (tax included)/night

Small Cabin: (4 Person Occupancy)

Regular Season Sept 15 – May 14 \$110.00 (tax included)/night

Peak Season May 15 – Sept 14 \$154.00 (tax included)/night

2 Bedroom Cabin: (6 Person Occupancy) \$198.00 (tax included)/night

River House: (14 Person Occupancy) \$385.00 (tax included)/night

CAMPSITES/RV SITES

Tent Sites: (has water/electricity/NO sewer) Tents/Pop-ups/Travel Trailers. One (1) unit per site. Rates are based on occupancy of two (2) people. Charges will apply for additional people.

Regular Season Sept 15 – May 14 \$40.00/night (Extra people \$5.00 /per night/limit 1

Peak Season May 15 – Sept 14 \$45.00/night (Extra people \$5.00 /per night/limit 1

RV Sites: (Water/Electricity/Sewer): RVs only – no tents allowed in RV Section. Rates are based on occupancy of two (2) people. Charges will apply for additional people.

\$45.00/night/4 people (Extra people \$5.00 /per night/per person – limit 1

THERE WILL BE A PRICE INCREASE ON ALL FACILITIES – JANUARY 2019

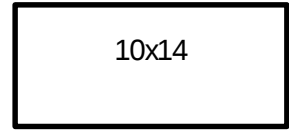
Cancellation/Refund Policy: Reservations cancelled more than thirty days before arrival date will receive full deposit minus 25% processing fee. Reservations cancelled less than 30 days before arrival day will forfeit entire deposit. No Show reservations will be charged full amount of reservation.

over for info on

shelters and cabins

Shelter

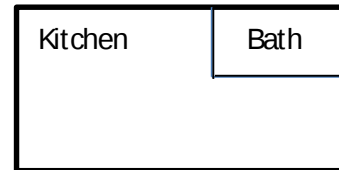
10x14 Room with Air Conditioning and Electricity. Shelter DOES NOT have Beds/Bathroom/Kitchen Facilities.



Small Cabin

1 Queen Bed / 1 Full Size Futon, Full Kitchen/Full Bath

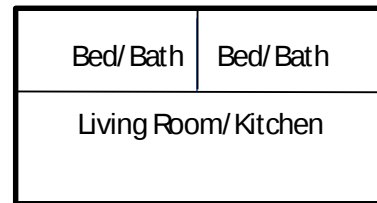
DOES NOT have a separate bedroom.



Large Cabin

2 Bedrooms / 2 Bath, Full Kitchen and Living Area

Each Bedroom has 1 Queen Bed / Full Size Futon in Living Room.



River House

2 Bedrooms / 2 Bath Full Kitchen and Living Area

Each Bedroom has 2 Queen Beds / 3 Full Size Futon in Living Room.

